



ИБП Eaton Blade UPS - BladeUPS Firmware (V2.08) - Процедура обновления и инструкции по установке

Постоянная ссылка на страницу: <https://eaton-power.ru/catalog/online/eaton-bladeups/>

# Instructions for Upgrading BladeUPS Firmware

**All UPS in a parallel system must have the same version of firmware. Upgrades to v2.xx in parallel systems that use v1.xx will require securing the load on Bypass until the upgrade of all UPSs can complete.**

## Procedure(executable upgrades):

1. The most current firmware upgrade can be downloaded from the [Eaton](http://powerquality.eaton.com) website. (<http://powerquality.eaton.com>). At the time of shipment, firmware was also included on an enclosed CD. An existing system may have to be upgraded to avoid software conflicts.
2. The upgrade is provided in the form of an executable file that will attempt to connect to the UPS and upgrade the firmware. The file can also be unzipped into a directory if the default communications configuration does not work.
3. Ensure the UPS is powered and in one of the following states (bypass mode or UPS off mode). **Note: All modules in a parallel system must be upgraded to the same firmware version, v2.xx, in order to restart the system.** This is also a good time to upgrade the Bridge Card if needed.
4. Ensure there is a serial communication cable connected between the computer COM1 and the BladeUPS service COM port. If your PC doesn't support COM1 then follow the instructions for batch file upgrades. Also, ensure that no other applications are using COM1.
5. Double click the executable file from Windows Explorer to start the upgrade. If the flash process fails, restart the program by double clicking the executable file again. Figure 1 represents the dialog box presented when the program is run. Select the OK button. Figure 2 represents the dialog that reminds you that parallel systems must all have the same firmware version. Select the Setup button.
6. When the upgrade is complete, the UPS will return back to the UPS off state. Upgrade the remaining modules by repeating step 4 through 6.

**Note: After all modules have been completely upgraded, command the system back to normal.**

# Instructions for Upgrading BladeUPS Firmware

## Procedure (batch file upgrade):

1. Unzip the upgrade file (executable) into a temporary folder on the PC if it has not already been done.
2. Ensure there is a serial communication cable connected between the computer COM port and the UPS. If the PC doesn't support COM 1 then select the appropriate batch file (up to COM8). The batch file may also be edited to the appropriate COM port the PC will use. The COM setting in the last line of the batch.
3. Ensure the UPS is powered and in one of the following states (bypass mode or UPS off mode). Note: All modules in the system must be upgraded to the same firmware version, v2.xx in order to restart the system. This is also a good time to upgrade the Bridge Card if needed.
4. Run the batch file from the windows/run dialog or a command line window to start the upgrade. If the flash process fails, restart the upgrade by running the batch file again. Figure 4 represents the command window during the upgrade; after the upgrade is complete the window will close.
5. When the upgrade is complete, the UPS will return back to the UPS off state. Upgrade the remaining modules by repeating step 4 through 5.

**Note: After all modules have been completely upgraded, command the system back to normal.**

# Instructions for Upgrading BladeUPS Firmware

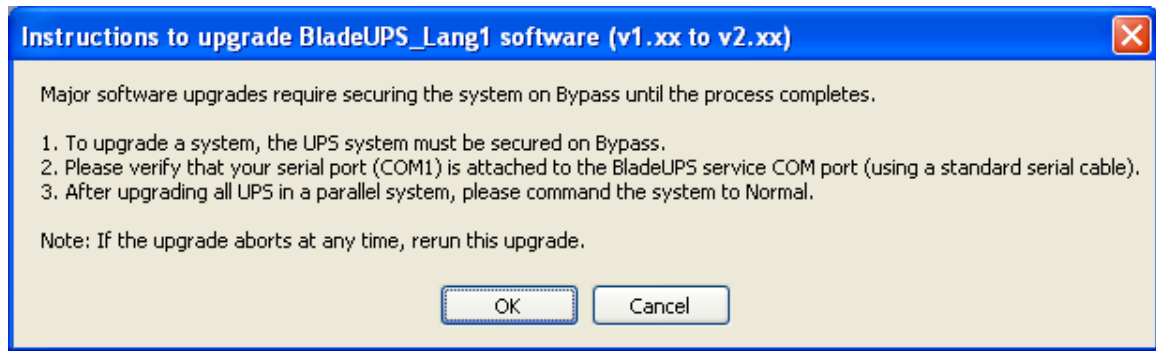


Figure 1 (Instructions Dialog Box Example)

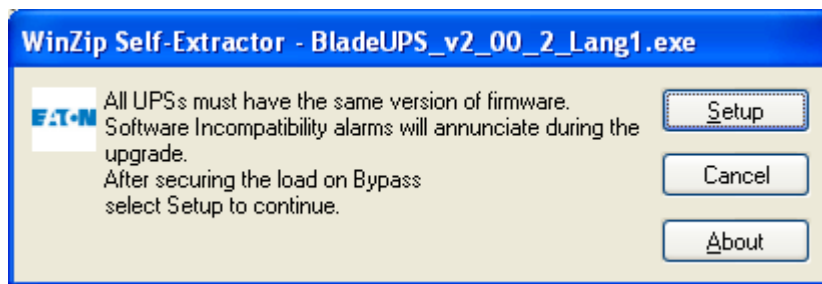


Figure 2 (Start upgrade Dialog Box Example)

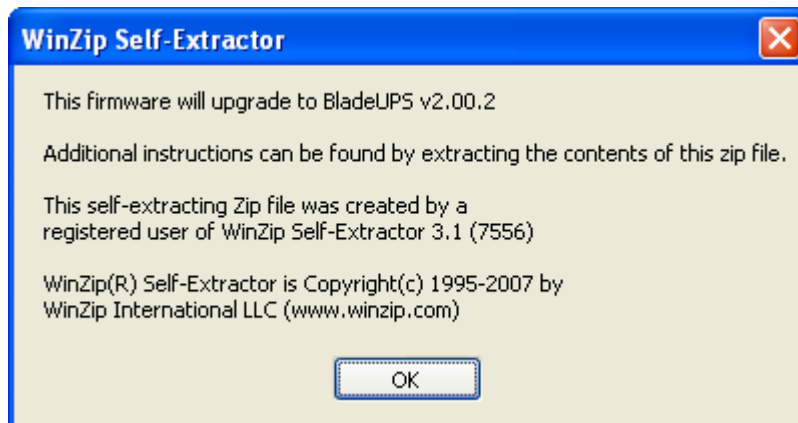


Figure 3 (About) Dialog Box Example

# Instructions for Upgrading BladeUPS Firmware

```

C:\DOCUME~1\0082062\LOCALS~1\Temp\WZSE2.TMP\cFlash.exe
Powerware cFlash Utility v1.1.0.5
1) Checking for Device at COM1...Success!
   XCP communications established on COM1, 19200 baud

2) Putting Device into Service Mode...Success!
3) Checking for Flash Capability...Success!
4) Reading ROM File...Success!
5) Starting Flash Data Programming...
   Programming Address: 007B2D00
  
```

Figure 4 (Batch File upgrade, window closes when complete) Example

## Release Notes For BladeUPS Version 2.08:

This version is for all LV and HV models.

1. Metering improvement when in HE Mode.
2. Additional delayed start-up capability for both RT and Parallel units.
3. Improvement in Battery Test Pass/Fail log entry.

Language Pack 1	Language Pack 2	Language Pack 3	Language Pack 4	Language Pack 5	Language Pack 6
English	English	English	English	English	English
Spanish	Finnish	Hungarian	Greek	Chinese	Korean
German	Swedish	Romanian	Turkish		
Language Pack 7	Language Pack 8	Language Pack 9	Language Pack 10	Language Pack 11	Language Pack 12
English	English	English	English	English	English
Czech	Italian	Russian	French	Portuguese	Norwegian
Polish	Bulgarian				Italian